



## VFR800 Fitting Instructions

These instructions are designed to guide you through the fitting of a Wolf under the seat exhaust to the 1998 onwards VFR800.

To complete this task you will need the following tools:

1. 12 mm spanner or socket
2. Cross head screw driver
3. Flat head screw driver
4. 8 mm spanner or socket
5. 10 mm spanner or socket

You will also need all the parts supplied in the Wolf kit. You should check now that you have all the parts before you start:

1. ✓ Two mufflers
2. ✓ A Y shaped pipe
3. ✓ A smaller L shaped pipe
4. ✓ A new battery box
5. ✓ A new under tray
6. ✓ A number plate bracket
7. ✓ A small right angles hanger bracket
8. ✓ Two springs
9. ✓ A bolt pack

To begin the installation you will need to strip the original Honda parts from the bike.

Remove the seat and then unbolt the seat plastics and remove these from the bike.

Remove the stock silencer - this is held in place by one bolt on the pillion foot peg hanger and a clamp at the lower end of the pipe where it meets the collector box.

Disconnect the battery from the bike and remove it. Then disconnect or unclip the various fuse boxes, relays and so forth that sit on the battery box.

Unclip the EFI control box from the under tray and hold this out of the way to one side. You can simply hang it over the edge of the sub frame for now. Hang the wires that fitted to the indicators over the side too, just to keep them out of the way.

Remove the entire black plastic under tray in one piece from the bike and store it safely. You will need to unclip the rear brake hoses from their mounting on this tray (near the shock under the tray)

You now have a clean slate to start fitting the Wolf under seat system.

Firstly fit the new battery box in place. This box sits where the old one did but you will not on the back of the box (facing the rear of the bike) there are two clips bolted on. These allow the box to bolt securely in place. Undo the two screws that hold each of these clips in place and open them up. Now place the battery box against the round cross member and close the clips around this cross member. Bolt the clips back together and the battery box will be securely held in place.

Fix the relay boxes and so forth, onto the new battery box as they were on the old box. The black relay can simply be placed against the front of the battery box and will stay in place, as it is too short a wire to move. The brake fluid reservoir fits to the pillar mounting on the right side of the battery box.

Next fit the L shaped lower pipe to the stock headers just as the original pipe was fitted. Use the stock Honda clamp to hold it tightly in place. Be sure to reuse the stock gasket or use exhaust compound on this joint to ensure a gas tight seal.

Find the small right-angled hanger bracket and bolt this in place. It fits at the back of the sub frame into the two bolt holes that originally secured the under tray. It must be fitted so that the widest part is parallel with the ground and the two Honda bolts go from the top, through the bracket and bolt it in place.

This will leave the narrow part of the bracket pointing at the ground - like a miniature version of the license plate hanger that was there before.

The two silencers are drilled near the spout in the end plates with 8 mm holes and 6 mm holes. The two 8 mm holes will line up with the two 8 mm holes in the hanger bracket. Bolt these cans in place with the 8 mm bolts supplied. The two angled spouts on the mufflers should point inwards towards each other.

You can now bolt the number plate hanger to the end plates of the mufflers using the 6 mm bolts supplied.

Take the Y piece of pipe and fit it into the two silencers at the double end and the L shaped piece of pipe at the single end. Use the two springs supplied to join the two pipes securely.

Check that the two silencers are properly aligned and level and that the joints with the pipe work are gas tight. Make any adjustments now and then tighten all the bolts.

Place the EFI box to the left hand outside of the sub frame at the rear and cable tie it in place so that it will sit under the bulge in the side of seat cowl and be protected from the elements.

Place the under tray in place between the sub frame rails and bolt it up to the hanger bracket at the back and the battery box at the front.

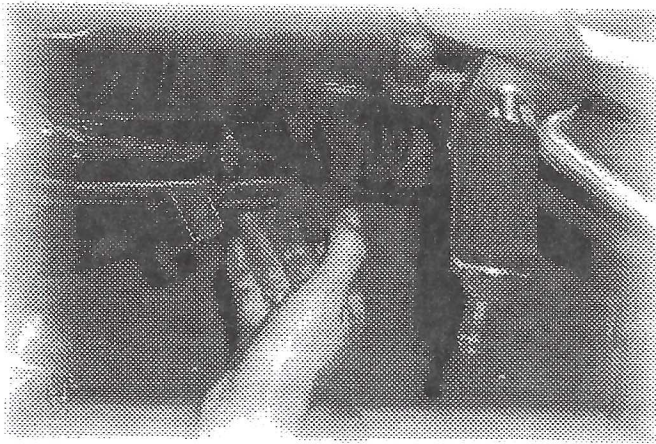
You may now put the seat plastics back in place and reconnect the battery. Fit the seats again and test ride the bike.

We have tested this system in all conditions with two riders totaling 420 lbs in place and have 2" of clearance from the back wheel to the silencers on full compression. However, if you have any doubts about weight or clearance, please adjust the spring pre-load on your rear shock to maximum to gain further clearance.

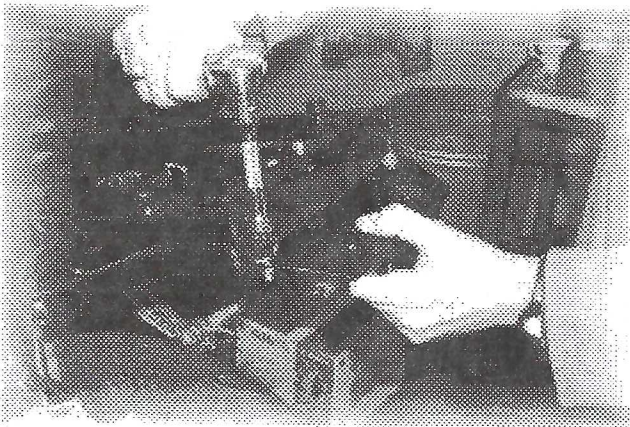


## **VFR800**

### **Fitting Photos**



USE THE EXISTING GASKET  
AND CLAMP ON THE PIPE  
WORK

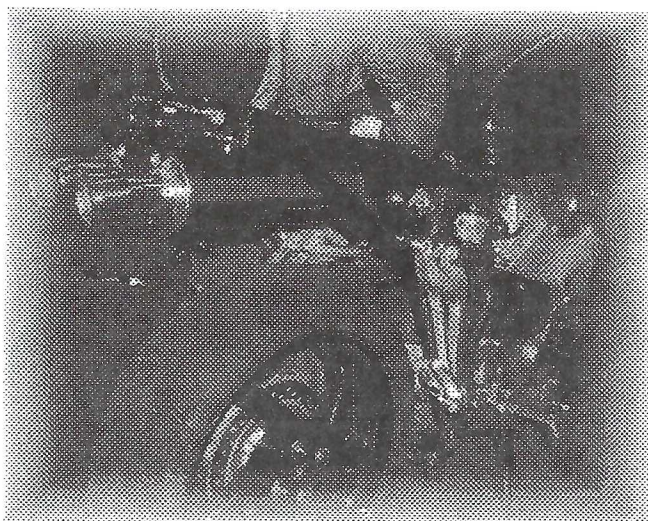


ATTACH THE REAR HANGER  
PLATE TO THE SUBFRAME  
USING THE ORIGINAL BOLTS

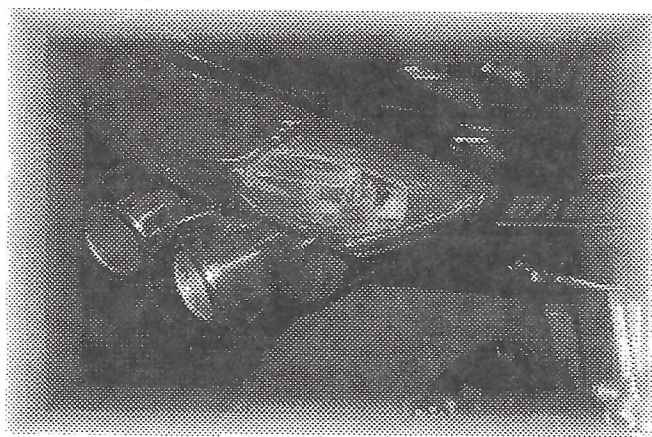


BOLT THE NEW BATTERY  
BOX IN PLACE TO THE  
CROSS MEMBER





FIT NEW SILENCERS TO THE  
BIKE WITH THE HANGER  
BRACKET



WHEN FINISHED THE CANS  
SHOULD SIT JUST BELOW  
THE TAIL LIGHT

